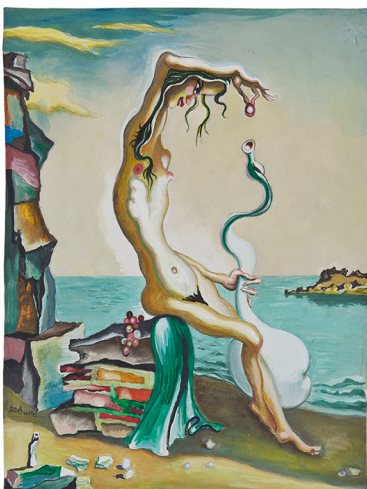


THE COMMERCIAL

TIM SCHULTZ
and
STEPHEN RALPH



THE FANTASTIC WOMAN DANCING BEFORE BÖCKLIN

and

THE SCHOLARS' ROCKS

THURSDAY 27/11/14, 6-8pm

exhibition: 27/11/14 - 13/12/14

Wednesday-Saturday, 11am-6pm

148 ABERCROMBIE STREET, REDFERN, NSW, AUSTRALIA +61 2 8096 3292
office@thecommercialgallery.com
www.thecommercialgallery.com

image above: Tim Schultz, *Memory of My Adolescence in Cadaqués*, 2014, watercolour and gouache on paper,
41.00 x 31.50 cm (sheet), 62.00 x 50.00 x 4.00 cm (frame)



image: Stephen Ralph, *The Scholar's Rock 2*, 2014, bisque-fired earthenware, Australian hardwood, 40 x 25.5 x 21 cm

A two-person exhibition comprising six paintings on paper (gouache and watercolour) painted by Tim Schultz on a recent trip to Cadaqués and Paris and three small sculptures by Stephen Ralph.

TIM SCHULTZ

Tim Schultz (b. 1960, Sydney) completed his Bachelor of Fine Arts at City Art Institute, Sydney (1983) and his Doctor of Philosophy at Sydney College of the Arts, the University of Sydney (2012).

Solo exhibitions include: Ornamental Perversion, The Commercial Gallery, Sydney (2014); Blood Red Make-Up Under the Armpits, The Commercial Gallery, Sydney and Sydney College of the Arts Galleries (2012); Schultztown, MOP Projects, Sydney (2011); The Cyclopean Orb is a Phantom, Peloton, Sydney (2010); Tim Schultz, Kaliman Gallery, Sydney (2005); solo exhibitions, Barry Stern Gallery, Sydney (1997, 1998, 2000); Circus, (with Hany Armanious) CBD Gallery, Sydney (1996); Cheri de Tous, Barry Stern Gallery, Sydney (1996); Tim Schultz, Barry Stern Gallery, Sydney (1994); Tim Schultz, Rex Irwin Gallery, Sydney (1990); Cave of Plato, Rex Irwin Gallery, Sydney (1987).

Group exhibitions include: TWO/THREE, The Commercial Gallery, Sydney (2012); Rimbaud Rambo, curated by Geoff Newton at Neon Parc, Melbourne (2008); OBLIVION PAVILION, curated by Amanda Rowell at Gertrude Contemporary Art Spaces, Melbourne and Roslyn Oxley9 Gallery, Sydney (2008); Predictive Txxx, curated by Hany Armanious at Hamish McKay Gallery, Wellington (2006); Cartoons and Caricature in Contemporary Art, curated by Ann Carew at Geelong Art Gallery, Geelong (1998); Shirthead (Hany Armanious, Adam Cullen, Mikala Dwyer, Nike Savvas, Tim, Schultz, Tony Schwensen, Troy Skewes and Justene Williams), curated by Hany Armanious, Mori Annexe in Sydney (1993); The Nude 1992, curated by Maudie Palmer and Anna Clabburn at Heide Museum of Modern Art, Melbourne (1992); Fresh Art, curated by Felicity Fenner and Anne Loxley at SH Ervin Gallery (1989); The Big Bang at The Gunnery, Sydney, a satellite exhibition to the Biennale of Sydney (1987).

Schultz has been shortlisted for the Archibald Prize (1997) and five times for the Sulman Prize (1986, 1990, 1993, 1995, 1998) at the Art Gallery of New South Wales, Sydney.

In 2006, he was awarded the Art Gallery of New South Wales Cité Internationale des Arts studio residency in Paris.

From the beginning of his career, Schultz's art practice ran parallel to music. From 1979 until 1983, he was the creative force behind the Sydney post-punk band, The Makers of the Dead Travel Fast. Music is a constant framing element in Schultz's work, with his deep interest in certain genres, in particular glam rock.

Tim Schultz's 2014 painting, Guimard-Schlupfyr, is in the collection of Artbank, Sydney.

STEPHEN RALPH

Stephen Ralph (b. 1966, Perth) graduated in sculpture from the National Art School (1991). In 1998, he co-founded Stone Villa Inc, a prominent artist collective and studio complex in Sydney.

Solo exhibitions include: South Wind, The Commercial Gallery, Sydney (2013); Austral Avenue, Melbourne (2006); Front Room, Sydney (2003); In and out of love, Elastic, Sydney (2001); Published Art, Sydney (2001), CBD, Sydney (1998); 151 Regent Street, Sydney (1996, 1997, 1998); Selenium, Sydney (1995); Artbox, Sherman Galleries, Sydney (1995).

Group exhibitions include: Assembly - contemporary ceramics, curated by Kay Aboude, Margaret Lawrence Gallery, The University of Melbourne; OUI we, The Commercial Gallery, Sydney (both 2014); TWO/THREE, The Commercial Gallery, Sydney (2012); Figure and Ground, Utopian Slumps, Melbourne, curated by Melissa Loughnan and Jane O'Neill (2012); 20/20, curated by Robert Lake at Damien Minton Gallery, Sydney, (2011); City Mambo, at Shin Leh Yuan Art Space, Taipei (2006); Rough Trade (Jay Balbi, Adam Cullen, Callum Morton, Stephen Ralph, Tony Schwensen, Rodney Spooner), curated by Jane Gallagher at Plimsoll Gallery, Hobart (1998).

Stephen Ralph's works, Artemis of Ephesus and Altar of Adonis, are in the collection of Artbank, Sydney.



[unsubscribe from this list](#) | [update subscription preferences](#)